



Royal Conservatoire
of Scotland

GRADE 1 SCOTTISH HARP
TECHNICAL WORK

The Technical Work section is worth 18 points of the exam overall and candidates will be asked to play approximately one test from each section. All tests should be played from memory and candidate can choose to play in C major as written or transposed into Eb major.

SCALES:

One octave ascending and descending, right or left hand (an octave lower)



Triplets descending and ascending, right or left hand in the following pattern



TRIADS: In the following pattern

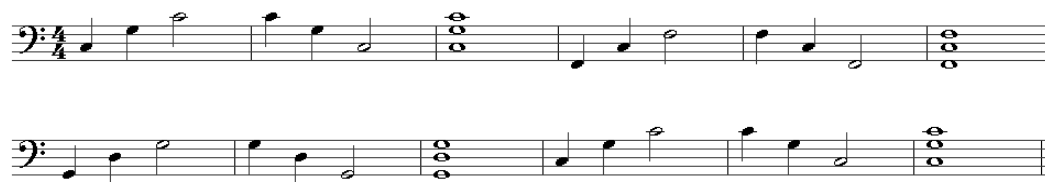


EXERCISES:

Changing fingers on a repeated note, right hand only, in the following pattern



Octaves and fifths, left hand only in the following pattern



Repeating notes, alternating hands - stems up right hand, stems down left hand.



QUICK STUDY – SCOTTISH HARP

General Guidelines

The Quick Study section is worth 21 marks in the exam overall. In the quick study, you are expected to play back a short passage of music. This is to test your ability to internalise and reproduce the music on your instrument. You will be given the option to attempt the test either at sight or by ear.

If at sight:

- The examiner will hand you the music and will give two bars' pulse to indicate the general tempo expected.
- You will then have half a minute in which to look through and, if you wish, try out the piece before assessment.
- The examiner will indicate, after which you should play the piece as written.

If by ear:

The examiner will perform each half (shown by a comma) of the tune (only) of the piece three times and you will be expected to play the excerpt back after each time. You will not be able to see the examiner's strings. You will be assessed on the strongest of your three attempts.

- The examiner will first name the key, sound and name the starting note and play the tonic chord as a broken chord.
- The examiner will then give a two-bar count-in and perform the first half of the tune.
- You will then play the first half of the tune back.
- The examiner will then give a two-bar count-in and perform the first half of the tune for a second time. You will then play the first half of the tune back for a second time.
- The examiner will then give a two-bar count-in and perform the first half of the tune for a third time. You will then play the first half of the tune back for the third and final time.
- The examiner will then repeat the above for the second half of the tune.

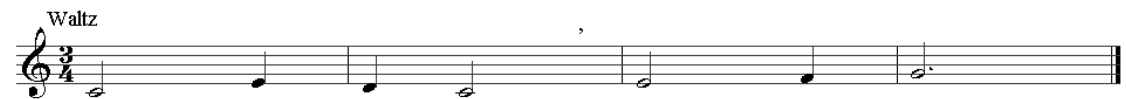
Remember that the examiner will be looking for fluent and confident delivery, with a clear reference to style and musical character.

GRADE 1 QUICK STUDY

Perform EITHER at sight or by ear, at your choice, a short passage in air or waltz time.

The candidate can choose either C major or Eb major

Specimens for Grade 1:



PRACTICAL & AURAL MUSICIANSHIP – SCOTTISH HARP

General Guidelines

The Practical & Aural Musicianship (PAM) section is worth 21 points of the exam overall.

Practical and aural musicianship in Scottish tradition often encompasses the ability to learn and manipulate music by ear. The visual communication between master and pupil, or between musicians in a session, is often just as important. The RCS Scottish Traditional Music Graded Exams therefore encourage the candidate to develop aural awareness of rhythm, melodic shape and phrasing, extemporisation and harmonic accompaniment to a variety of tune idioms in a face-to-face situation with the examiner.

In the PAM section, the examiner plays one eight-bar tune chosen from several idioms and conducts a few brief tests designed to assess and encourage your aural understanding of the tune's rhythms, phrasing and melody.

GRADE 1 PRACTICAL & AURAL MUSICIANSHIP

The examiner plays eight bars of an air or waltz.

The candidate is asked to:

- A. Clap the pulse of the tune (*see sample pulse marks*) and identify its time signature as either 3/4 or 4/4.
- B. Indicate to the examiner where the first phrase of the tune ends (*see sample phrasing brackets*) by raising a hand or saying 'here' as the examiner plays the tune. The examiner will play the tune twice.
- C. Clap or tap the rhythm of the phrase, as played by the examiner.
- D. Sing an interval of two consecutive notes within the tune selected and played by the examiner. The interval will be no greater than a 3rd and the examiner will alter the octave to suit young candidates with changing voices.

Waltz

The image shows two staves of musical notation in 3/4 time. The first staff is labeled 'Waltz' and has a bracket above it spanning the first six bars. Below the notes on both staves are 'X' marks representing pulse marks. The first staff has pulse marks at the beginning of each bar. The second staff has pulse marks at the beginning of each bar, except for the last bar which has two pulse marks.

Air

The image shows two staves of musical notation for a piece titled "Air". The music is written in 4/4 time. The first staff begins with a treble clef and a 4/4 time signature. A bracket above the staff spans the entire piece. The notes in the first staff are: quarter, quarter, quarter, quarter, half, quarter, quarter, quarter, quarter, quarter, quarter, quarter, quarter, quarter, quarter, quarter. Below each note is an "X". The second staff begins with a treble clef. The notes are: quarter, quarter, quarter, quarter, half, quarter, quarter, quarter, quarter, quarter, quarter, quarter, quarter, quarter, quarter, quarter. Below each note is an "X". The piece ends with a double bar line.